



THEODORE K GUY ASSOCIATES PC

ARCHITECTS AND STRUCTURAL ENGINEERS

P.O. BOX 1640
23200 HWY. 82
BASALT, COLORADO 81621
PHONE (303) 927-3167
FAX (303) 927-4813

DATE	REMARKS
3-14-94	PERMIT SET
3-24-94	REVISIONS
5-3-94	CONSTRUCTION SET
7/1/96	UPDATE

MOUNTAIN HOUSING GROUP

LOT 640C
TELLURIDE MOUNTAIN VILLAGE

JOB #: 93124
DRAWN: JP
CHECKED:
PRINTED: 3-24-94

SHEET TITLE:
LANDSCAPE PLAN

A1.2

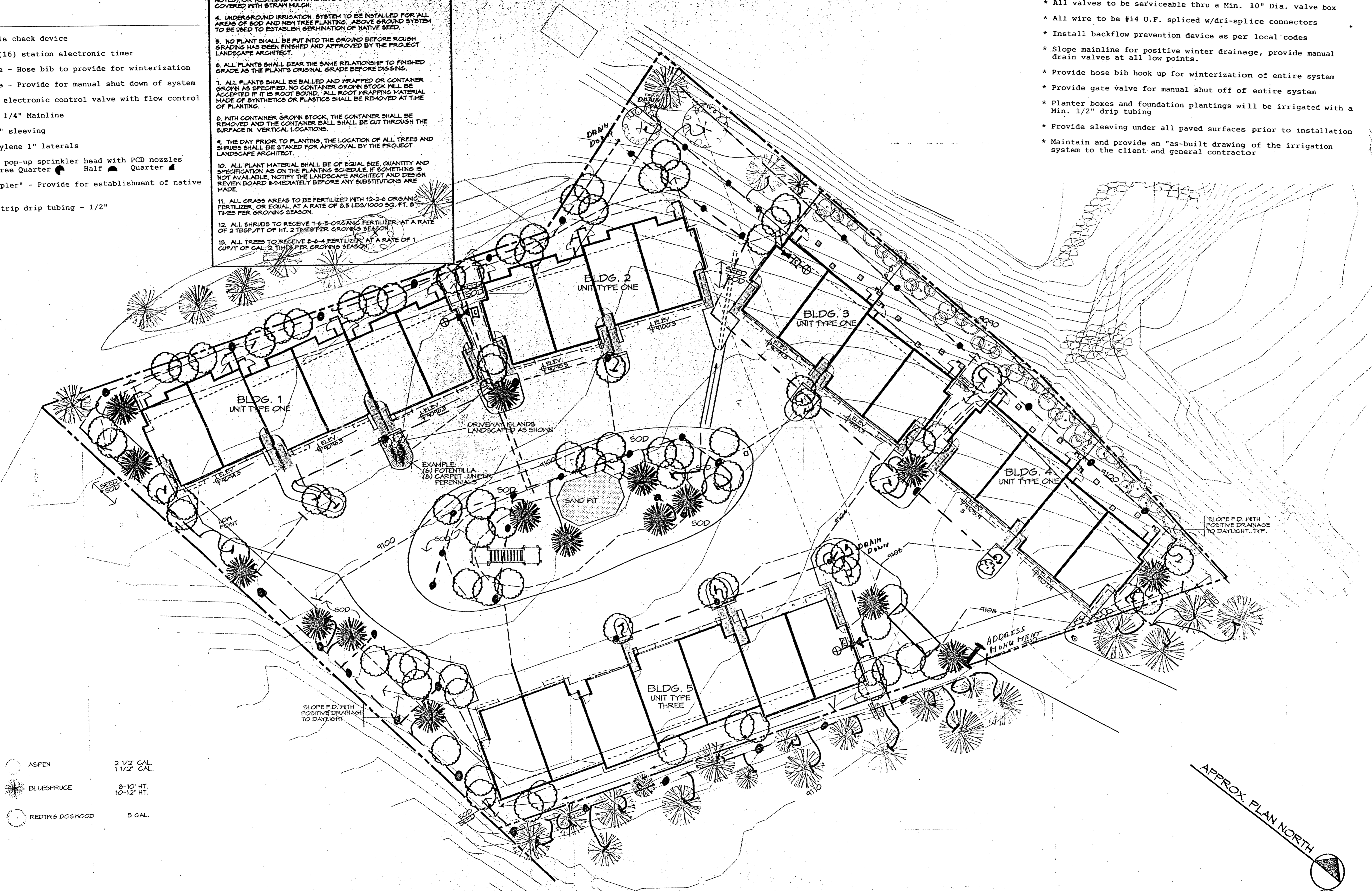
COPYRIGHT
THEODORE K GUY ASSOCIATES PC

**GENERAL NOTES
LANDSCAPE PLAN**

1. THE CONTRACTOR SHALL SUPPLY ALL PLANT MATERIALS IN QUANTITIES SUFFICIENT TO COMPLETE THE PLANTING SHOWN ON ALL DRAWINGS.
2. ALL MATERIAL SHALL CONFORM TO THE GUIDELINES ESTABLISHED BY THE CURRENT AMERICAN STANDARD FOR NURSERY STOCK, PUBLISHED BY THE AMERICAN ASSOCIATION OF NURSERYMEN OR EQUIVALENT.
3. ALL DISTURBED AREAS ARE TO BE COVERED WITH 4" TOPSOIL AND EITHER LEFT FOR SOD, TENANT IMPROVEMENTS (WHERE NOTED), OR RESEDED WITH A NATIVE GRASS SEED MIX AND COVERED WITH STRAW MULCH.
4. UNDERGROUND IRRIGATION SYSTEM TO BE INSTALLED FOR ALL AREAS OF SOD AND NEW TREE PLANTING. ABOVE GROUND SYSTEM TO BE USED TO ESTABLISH GERMINATION OF NATIVE SEED.
5. NO PLANT SHALL BE PUT INTO THE GROUND BEFORE ROUGH GRADING HAS BEEN FINISHED AND APPROVED BY THE PROJECT LANDSCAPE ARCHITECT.
6. ALL PLANTS SHALL BEAR THE SAME RELATIONSHIP TO FINISHED GRADE AS THE PLANTS ORIGINAL GRADE BEFORE DIGGING.
7. ALL PLANTS SHALL BE BALLED AND WRAPPED OR CONTAINER GROWN AS SPECIFIED. NO CONTAINER GROWN STOCK WILL BE ACCEPTED IF IT IS ROOT BOUND. ALL ROOT WRAPPING MATERIAL MADE OF SYNTHETICS OR PLASTICS SHALL BE REMOVED AT THE TIME OF PLANTING.
8. WITH CONTAINER GROWN STOCK, THE CONTAINER SHALL BE REMOVED AND THE CONTAINER BALL SHALL BE CUT THROUGH THE SURFACE IN VERTICAL LOCATIONS.
9. THE DAY PRIOR TO PLANTING, THE LOCATION OF ALL TREES AND SHRUBS SHALL BE STAKED FOR APPROVAL BY THE PROJECT LANDSCAPE ARCHITECT.
10. ALL PLANT MATERIAL SHALL BE OF EQUAL SIZE, QUANTITY AND SPECIFICATION AS ON THE PLANTING SCHEDULE. IF SOMETHING IS NOT AVAILABLE, NOTIFY THE LANDSCAPE ARCHITECT AND DESIGN REVIEW BOARD IMMEDIATELY BEFORE ANY SUBSTITUTIONS ARE MADE.
11. ALL GRASS AREAS TO BE FERTILIZED WITH 12-2-6 ORGANIC FERTILIZER, OR EQUAL, AT A RATE OF 0.5 LBS/1000 SQ. FT. 5 TIMES PER GROWING SEASON.
12. ALL SHRUBS TO RECEIVE 1-6-5 ORGANIC FERTILIZER, AT A RATE OF 2 TBS/FT OF HT. 2 TIMES PER GROWING SEASON.
13. ALL TREES TO RECEIVE 6-6-4 FERTILIZER AT A RATE OF 1 CUP/1" OF CAL. 2 TIMES PER GROWING SEASON.

- * This system was designed for a Min. of 45 PSI static pressure
- * Mainline to be at a Min. depth of 12"
- * Lateral line to be at a Min. depth of 6"
- * All valves to be serviceable thru a Min. 10" Dia. valve box
- * All wire to be #14 U.F. spliced w/dri-splice connectors
- * Install backflow prevention device as per local codes
- * Slope mainline for positive winter drainage, provide manual drain valves at all low points.
- * Provide hose bib hook up for winterization of entire system
- * Provide gate valve for manual shut off of entire system
- * Planter boxes and foundation plantings will be irrigated with a Min. 1/2" drip tubing
- * Provide sleeving under all paved surfaces prior to installation
- * Maintain and provide an "as-built drawing of the irrigation system to the client and general contractor"

- SYMBOL LEGEND**
- Abco 825Y double check device
 - Abco Vision II (16) station electronic timer
 - Abco gate valve - Hose bib to provide for winterization
 - Abco ball valve - Provide for manual shut down of system
 - Abco series 250 electronic control valve with flow control
 - Abco class 200 PVC 1 1/4" Mainline
 - Abco class 200 PVC 2" sleeving
 - Abco 10# NSF Polyethylene 1" laterals
 - Abco Abco series 570 pop-up sprinkler head with PCD nozzles
Full ● Three Quarter ● Half ▲ Quarter ▲
 - Abco Abco "Quick Coupler" - Provide for establishment of native areas
 - Abco Abco ura-pol blue strip drip tubing - 1/2"



- ASPEN 2 1/2" CAL.
1 1/2" CAL.
- BLUESPRUCE 8-10' HT.
10-12' HT.
- REDWING DOGWOOD 5 GAL.

IRRIGATION AND LANDSCAPE PLAN
@ 1" = 20'-0"

